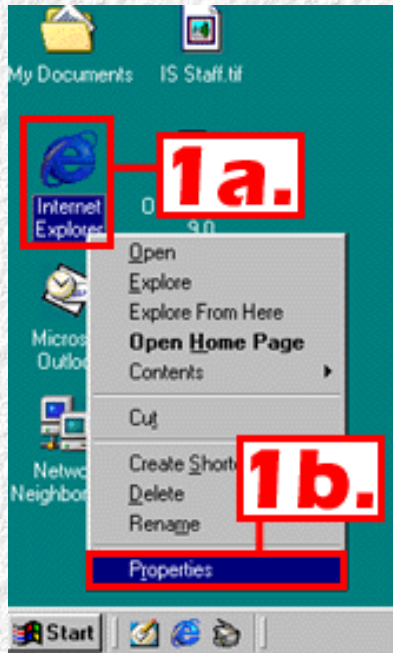


Dialup GCCCD using Windows 98

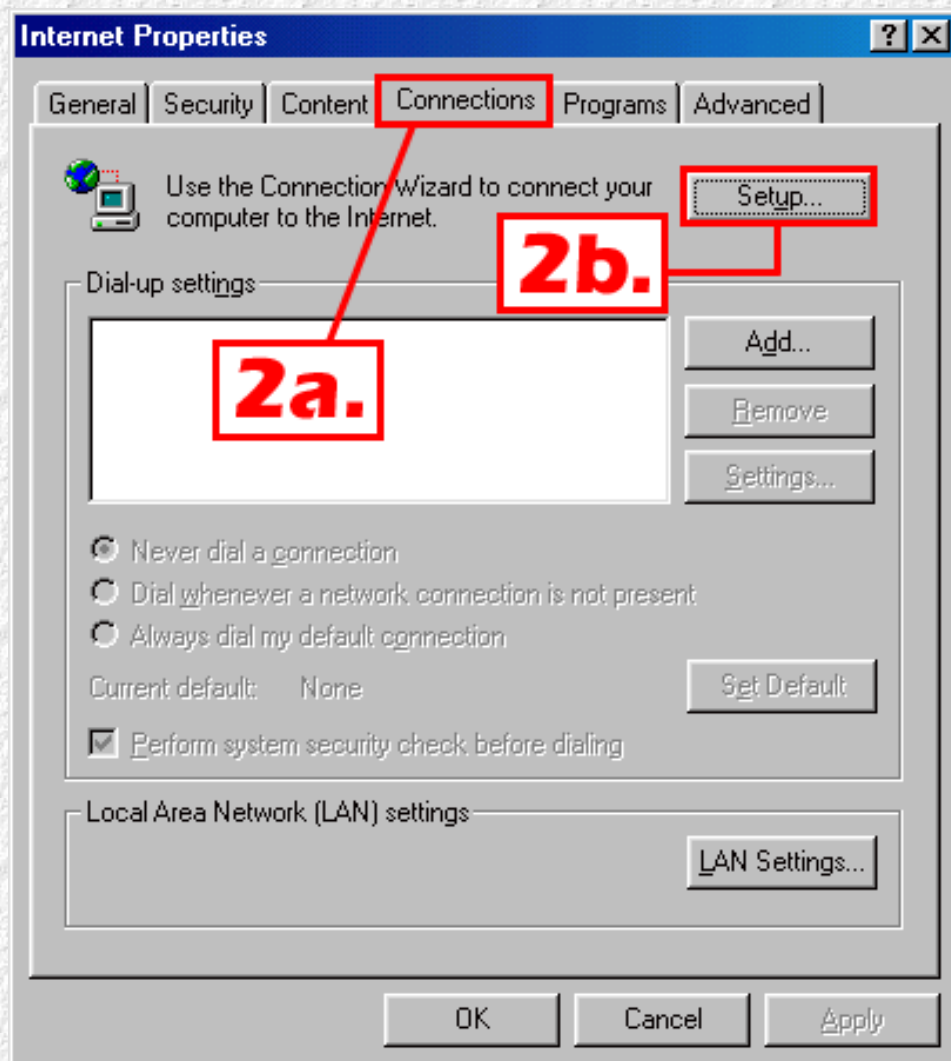
NOTE: Screen captures might only show a portion of the desktop/dialog box screens.

1. a. Right-click on Internet Explorer.



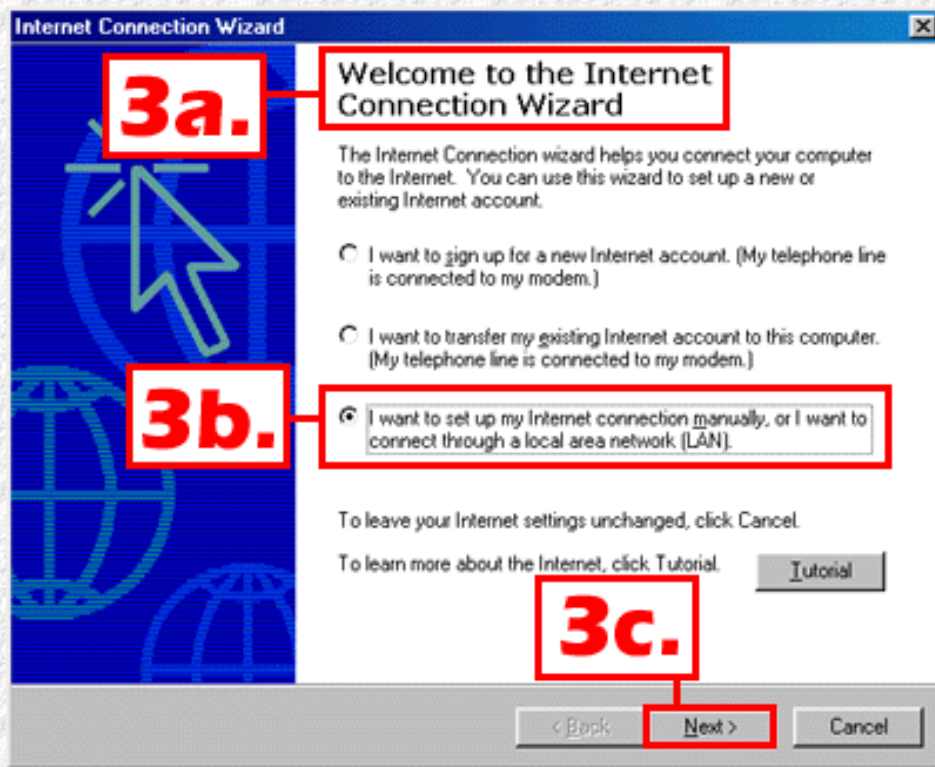
1. b. Left-click on Properties.

2. a. Click the Connection tab and make sure it is on top of the other tabs.



2. b. Click Setup to continue.

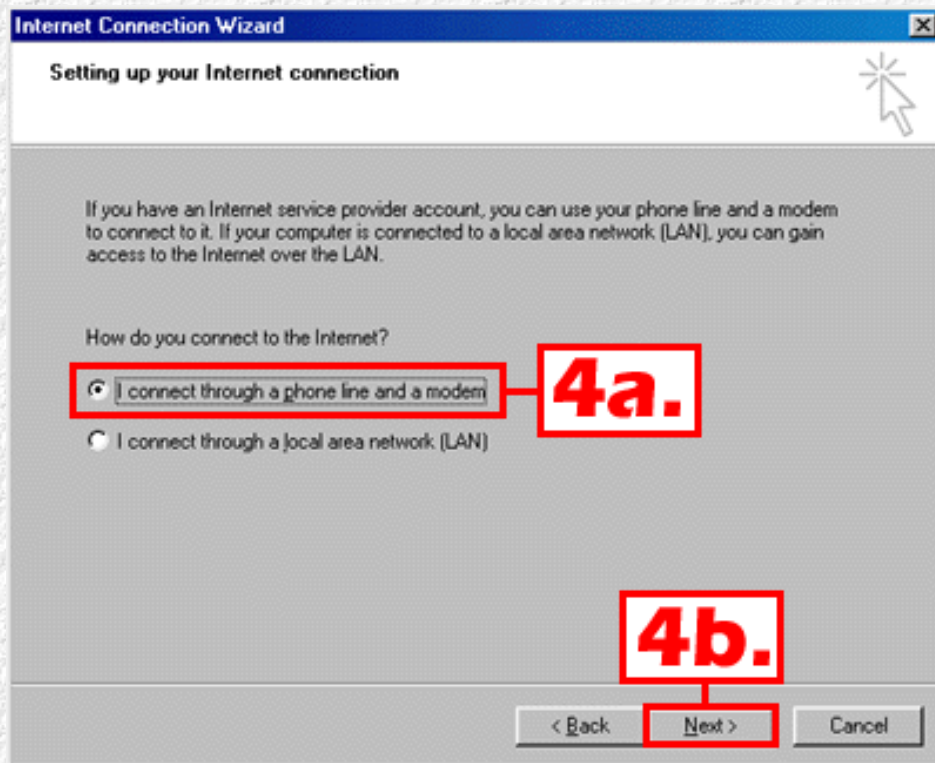
3. a. Now the Internet Connection Wizard starts up.



3. b. Make sure to check the third radio button "*I want to set up my Internet connection manually...*", ignoring the LAN connection.

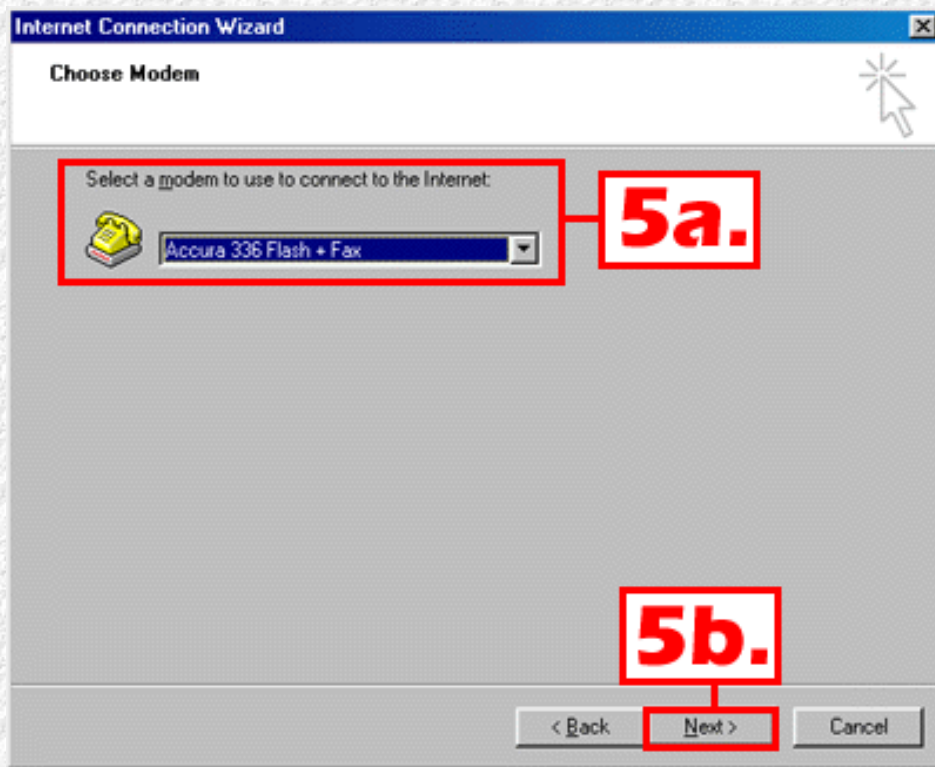
3. c. Click Next to continue.

4. a. Make sure "*I connect through a phone line and a modem*" has been selected.



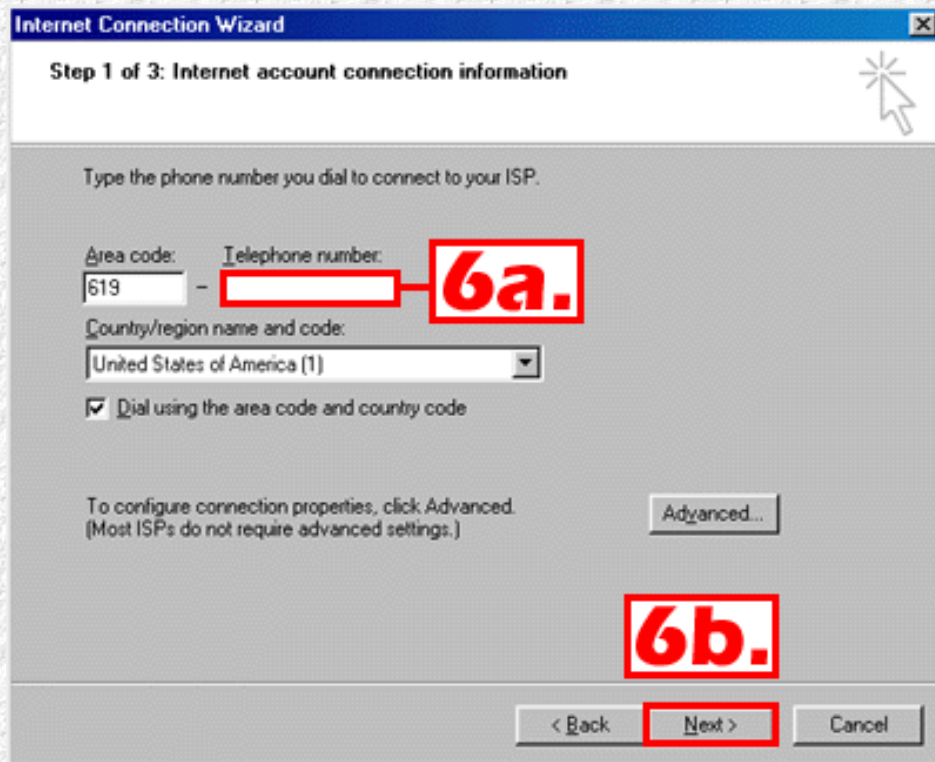
4. b. Click Next to continue.

5. a. In this screen, Windows 98 should have detected your modem and it should be selected as shown.



5. b. Click Next to continue.

6. a. Here you will enter the phone number to dialup GCCCD.



6. b. Click Next to continue.

7. a. Now you need to enter your log on name just as if you were logging on at work, but without the Network identification.

The screenshot shows the 'Internet Connection Wizard' window at 'Step 2 of 3: Internet account logon information'. The window title bar includes a close button (X). The main text reads: 'Type the user name and password you use to log on to your ISP. Your user name may also be referred to as your Member ID or User ID. If you do not know this information, contact your ISP.' Below this text are two input fields: 'User name:' containing 'firstname.lastname' and 'Password:' containing a masked password '*****'. A red box highlights both input fields, with a red arrow pointing to a red box containing the text '7a.'. At the bottom of the window, there are three buttons: '< Back', 'Next >', and 'Cancel'. The 'Next >' button is highlighted with a red box, and a red arrow points from a red box containing the text '7b.' to it.

7. b. Click Next to continue.

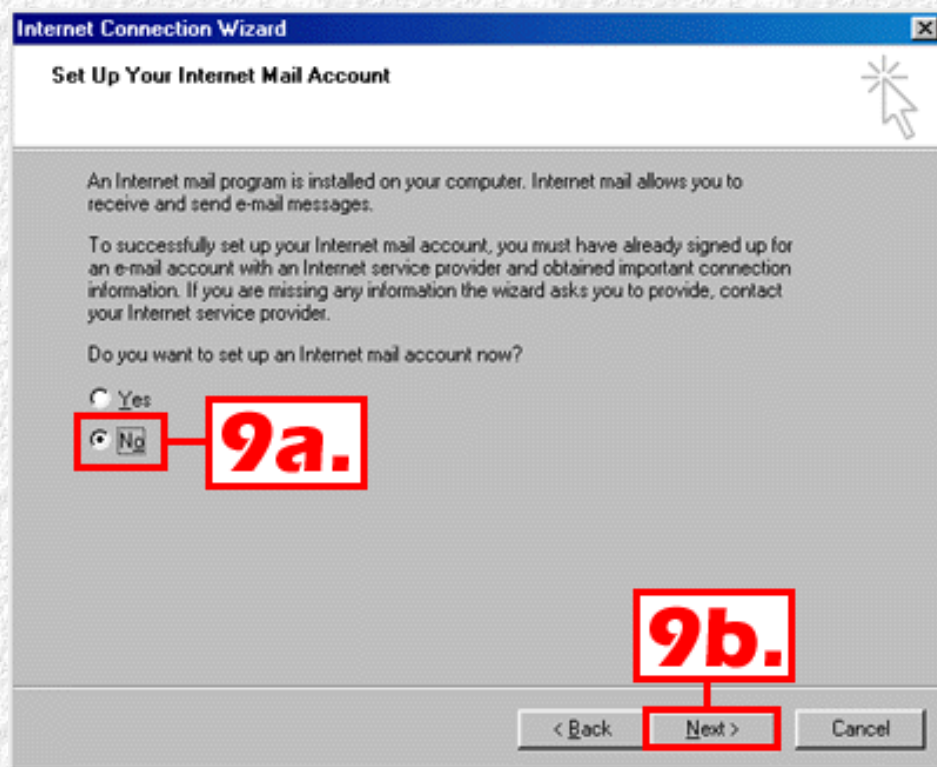
8. a. Now enter GCCCD as the connection name.

The screenshot shows the 'Internet Connection Wizard' window at 'Step 3 of 3: Configuring your computer'. The window title bar includes a close button (X). The main text reads: 'Information about your Internet account is grouped together as a dial-up connection and labeled with a name you provide. Type a name for the dial-up connection. This can be the name of your ISP or any name you want to use.' Below this text is a single input field labeled 'Connection name:' containing the text 'GCCCD'. A red box highlights the input field, with a red arrow pointing to a red box containing the text '8a.'. At the bottom of the window, there are three buttons: '< Back', 'Next >', and 'Cancel'. The 'Next >' button is highlighted with a red box, and a red arrow points from a red box containing the text '8b.' to it.

8. b. Click Next to continue.

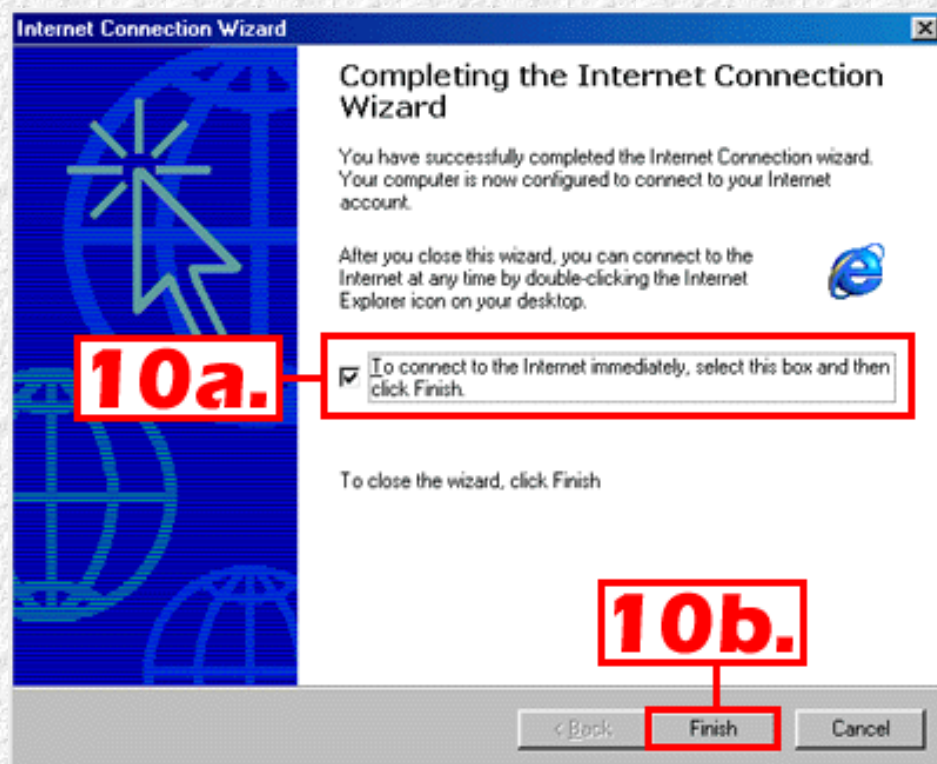
9. a. Make sure to check No to sign up for an email account.

9. b. Click Next to continue.

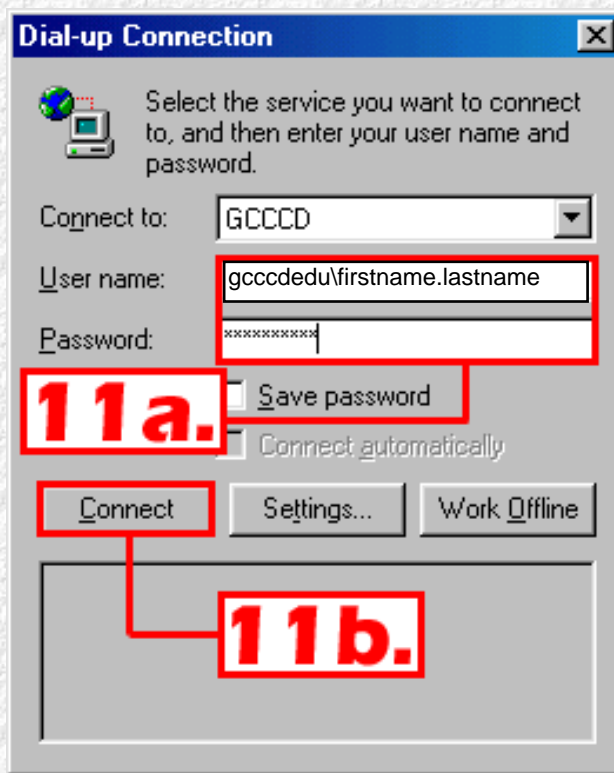


10. a. Click the check box so you can test the dialup configuration.

10. b. Click Finish to continue.

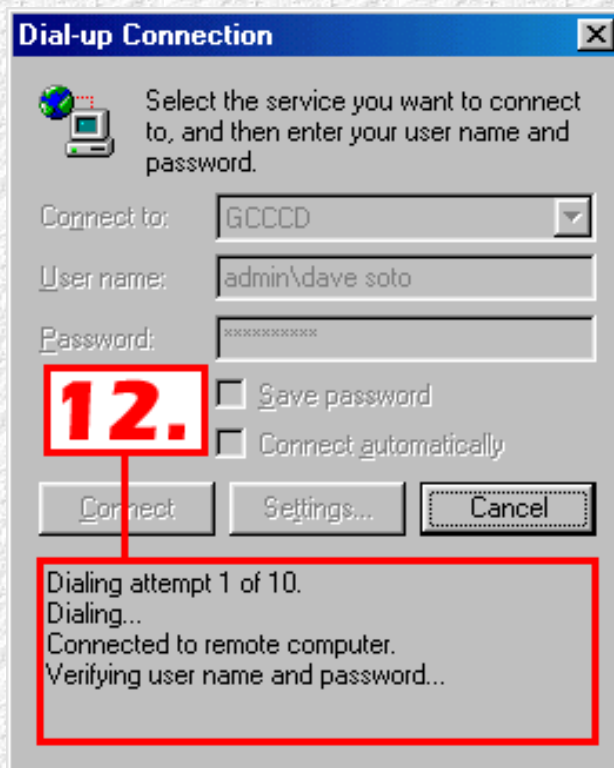


11. a. Make sure to add the correct network prefix, i.e., admin, (or ics-g or ics-c) before your name.

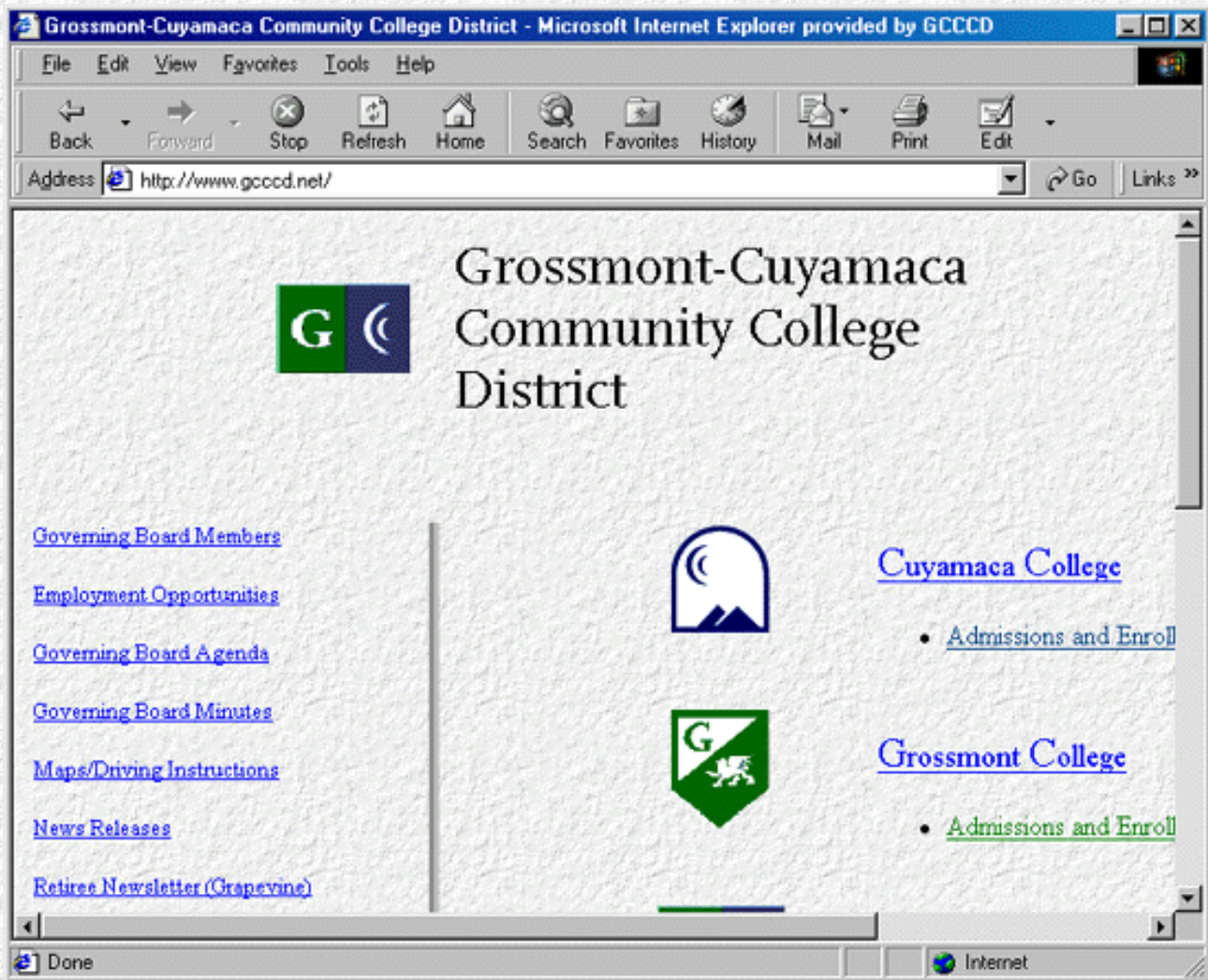


11. b. Click Connect to test the dialup connection.

12. Now you must be patient while your phone dials up GCCCD and confirms your user name and password.



13. After a few moments you should be connected and see a web page being displayed, but it might not be GCCCD.



[back to Outlook Express](#)