

Choosing a career? Changing careers?  
 These fields need new GIS professionals like  
**YOU!**



### About the school

Palomar College is a two-year community college located in San Marcos, California. It is officially accredited by the Western Association of Schools and Colleges, and currently serves more than 30,000 full-time and part-time students. The college offers more than 250 Associates Degree and certificate programs. Financial aid in the form of grants, student loans, and work study are available to assist students offset the cost of instructional materials and tuition.

### Admissions and registration

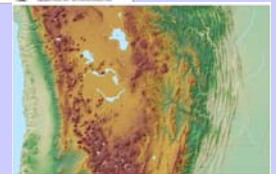
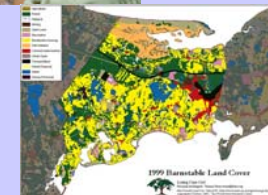
Palomar College is committed to providing equal educational and employment opportunities regardless of sex, race, ethnicity, color, religion, age, marital status, national origin, or handicap. As dates for registration change each semester, please consult <http://www.palomar.edu/> or call (760)744-1150 for the latest information.

### For more information, please contact:

Wing Cheung  
 Assistant Professor  
 Department of Earth, Space, and Aviation Sciences  
 1140 West Mission Road  
 Room NS-110 M  
 San Marcos, CA 92069  
 Phone: 760-744-1150 ext. 3652  
 E-mail: [wcheung@palomar.edu](mailto:wcheung@palomar.edu)

The author thanks ESRI, Charlie Neuman/The San Diego Union Tribune, and the USGS for providing photos used in this brochure.

# Certificate Program in GEOGRAPHIC INFORMATION SYSTEMS



**Palomar College**  
 Department of Earth,  
 Space, and Aviation  
 Sciences



# Certificate Program in Geographic Information Systems



## About The Certificate Program

The Certificate Program in Geographic Information Systems at Palomar College was established in 2004.

The program aims to give entry-level theoretical and technical training to students who may be interested in pursuing this exciting field in their future professional or academic careers.

The certificate program can be completed in one year (including summer session), but this may vary depending on an individual's previous experience with computers and course availability from semester to semester. Basic familiarity with computer operation (e.g. how to use a mouse) will greatly increase an individual's speed in completing the program.

Since this career-oriented certificate program is geared towards full-time students as well as working adults, classes are usually held on weekday evenings.

## The Curriculum

The coursework requirement for the certificate program consists of 5 courses, and can range from 14-16 units (depending on your choice of elective course).

### Core Courses: (Required):

Course ID	Course Name	Units
GEOG 120*	Introduction to GIS and GIS Software	4
GEOG 132	Database Management and Data Acquisition	4
GEOG 136	Intermediate ArcGIS: GIS Analysis	2
GEOG 138	GIS Internship	2

### Elective Courses (Choose One):

Course ID	Course Name	Units
GEOG 134	GIS Applications	2
CSIS 117	Introduction to Visual Basic	4

For a detailed description of each course, please consult the college catalog: <http://www.palomar.edu/catalog/>



\*If you have previously taken a GIS course, or feel that you have enough experience to waive out of the introductory level course, it is possible for such an arrangement to be made.



## Top Ten Reasons to Choose Palomar College

With the surge in the popularity of GIS technologies, we understand that there is also a corresponding increase in GIS programs around the country. To help you make an informed decision, we have listed several reasons as to why you may want to consider GIS education at Palomar College:

- Great teachers
- New state-of-the-art equipment
- Cost-effective, low cost per unit
- Small class size
- Diverse student body
- Internship placement assistance
- Professional connections
- Free GIS software for registered students
- Friendly, helpful atmosphere
- Up-to-date curriculum