

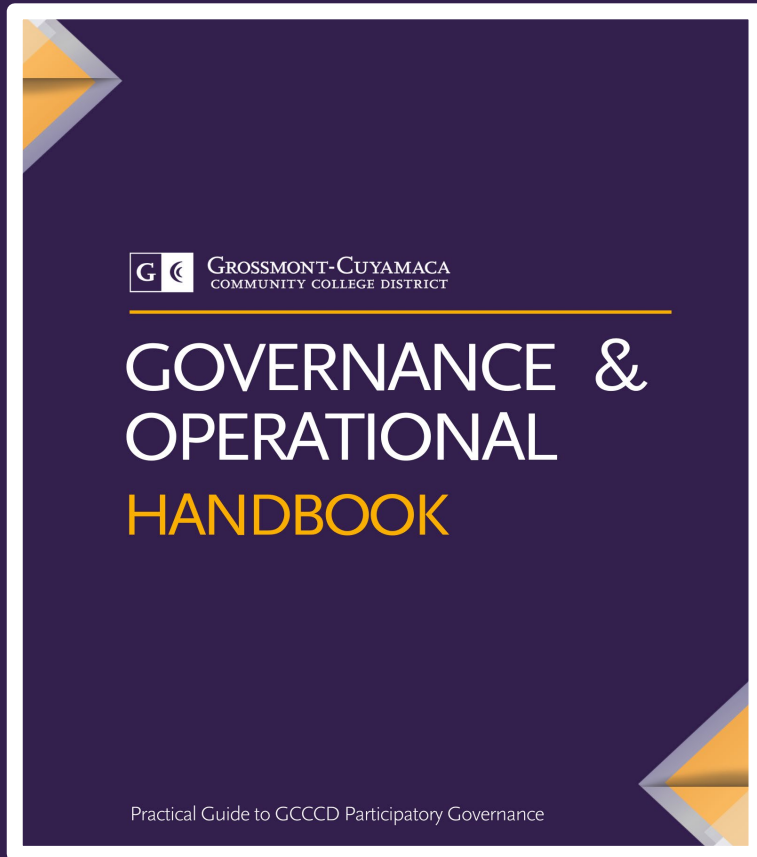
GCCCD Annual Operational Group Member Orientation

**Educational Support Services Operational Group
2025 – 2026**



GROSSMONT-CUYAMACA
COMMUNITY COLLEGE DISTRICT

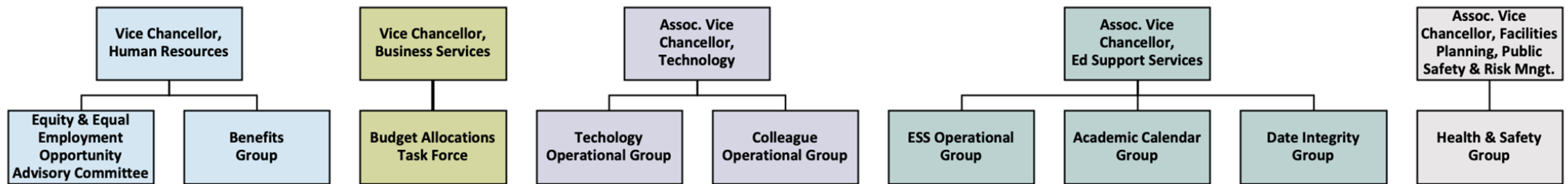
Overview of New Governance Language



GCCCD Governance & Operational Handbook

- Introduction (pg. 4)
- Philosophy (pg. 6)
- Governance and Operations (pg. 6)
- Constituents Representation & Responsibilities (pg. 7)
- Constituent Groups (pgs. 8-10)
- Governance Structure (pgs. 11/12)
- Governance Councils (pgs. 13-19)
- Operational Groups and Structure (pgs. 20-32)
- Chair and Member Responsibilities (pgs. 32/33)
- Communication and “Close the Loop” (pgs. 34/35)
- Quorum and Consensus (pgs. 35/36)
- Procedures (pgs. 36/37)
- Annual Review & Continuous Improvement (pg. 37)

GCCCCD Operational Groups Structure



Introduction to the Educational Support Services Operational Group



Educational Support Services (ESS) Operational Group

ESS Operational Group Charge:

To provide a seamless experience for students, the Educational Support Services Operational Group reviews and develops administrative procedures and standard operating practices in the student services and instructional areas, such as project plans for the implementation of legislation related to student services and instruction. The ESS Operational Group confers with the Educational Support Services Council to ensure compliance with policy and procedural guidance for issues impacting students district-wide.

Educational Support Services (ESS) Operational Group

Functions:

- Periodically review and recommend changes to policies and procedures on student services and instruction-related matters
- Review and recommend strategies to address legislative and regulatory changes that will impact student services programs and instructional activities
- Support the communication of changes to the campus community to help “close the loop”
- Recommend programs and services that will be beneficial to the educational experience of students
- Assist in the development, implementation, and review of districtwide plans, initiatives, and student support services and activities
- Ensure the use of student success, equity data and research to inform college practices and the allocation of resources
- Discuss system decisions with overlapping functional impacts
- Use a systems approach to ensure optimal capacity, avoid redundancy of effort, and increase efficiency
- Make recommendations for prioritizing projects

Educational Support Services (ESS) Operational Group

Composition

- **Chair:** Associate Vice Chancellor, Educational Support Services

District Members:

- Educational Support Services Business Analyst, District Associate
- Vice Chancellor, Technology

Members from each College:

- Vice Presidents, Student Services Vice Presidents,
- Academic/Instruction Admissions and Records Representative
- Articulation Officers
- Counselor, Chair or Designee
- Faculty Chair of Chairs or Designee (GC)
- Curriculum Committee Chair or Designee (CC)
- Instructional Dean
- Student Services Dean

Educational Support Services (ESS) Operational Group

Resource Personnel

- Senior Director, Fiscal Services
- Financial Aid Representative
- Senior Deans, Research and Planning / Institutional Effectiveness
- Additional Subject Matter Experts as needed

Reporting Relationships:

- The Associate Vice Chancellor, Educational Support Services
- Educational Support Services Council

Meeting Schedule

- 1st Thursday of the Month, 9:00 am to 10:00 am - via Zoom

Thank You!

